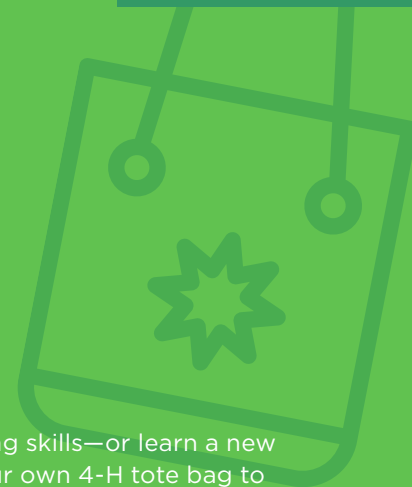


# Craft a 4-H Tote Bag



## Description

Show off your crafting skills—or learn a new skill—by creating your own 4-H tote bag to carry school items, daily essentials, or other odds and ends! Sewing helps kids learn coordination, curiosity and attention to detail.

## Supplies

- 1 yard main fabric
- 1/2 yard coordinating fabric for pocket
- 2.5 yard fusible interfacing
- 3 yards webbing for handle
- 3 inches of 1 inch-wide Velcro
- Basic sewing supplies



## Activity Steps

### (1/2 inch seam allowance)

1. Cut 4 pieces from the main fabric – 14 inches x 19 inches
2. Cut 4 pieces from the interfacing fabric – 14 inches x 19 inches
3. Cut 1 piece from the pocket fabric – 16 inches x 19 inches
4. Cut 1 piece from the interfacing fabric – 6 inches x 19 inches
5. Fuse interfacing pieces to the back of all the fabric pieces.
6. Fold pocket fabric in half – 8 inches x 19 inches and press.
7. Top stitch 1/4 inch from fold.
8. Pin and baste pocket to front of tote placing raw edges together at bottom and sides.
9. With right sides together (RST), stitch bottom seam of front and back.
10. Place bag open on surface with right side facing up.
11. Measure in 4 inches from sides of bag and mark.
12. Starting at the bottom seam, pin the strap to the front of bag at the mark, folding the raw edge under 1/4 inch.
13. At top of bag, measure 27 inches for handle and continue to pin webbing down other side of front.
14. Continue pinning strap to back of bag, leaving 27 inches for handle on back.
15. Continue pinning strap to remaining side of bag, meeting at the starting point.
16. Fold ends under 1/4 inch on raw edges of webbing.
17. Stitch strap to bag stopping 2 inches from top edge of bag on front and back.
18. Stitch across the folded edges of strap at bottom seam.
19. Stitch together side seams of bag.
20. To square the bottom of bag, fold the bottom seam of the corner to meet the side seam and stitch 1 inch from the point on both corners.
21. Trim excess fabric.
22. Turn and press.
23. Stitch lining RST on sides and bottom, leaving an opening for turning.
24. Square corners of bottom of lining as done for main tote.
25. With RST, pin lining to tote and stitch around top.
26. Turn bag through lining opening and stitch opening closed.
27. Insert lining into bag.
28. Press and top stitch 1/4 inch in from top edge of bag.
29. Center Velcro to inside top of front and back. Stitch in place.

► Learn more at [4-H.org/ToteBag](https://4-H.org/ToteBag)

Brought to you by JOANN